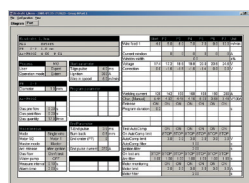
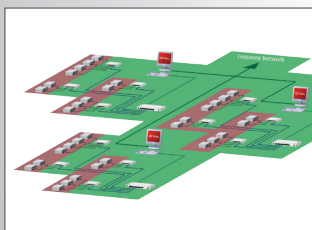
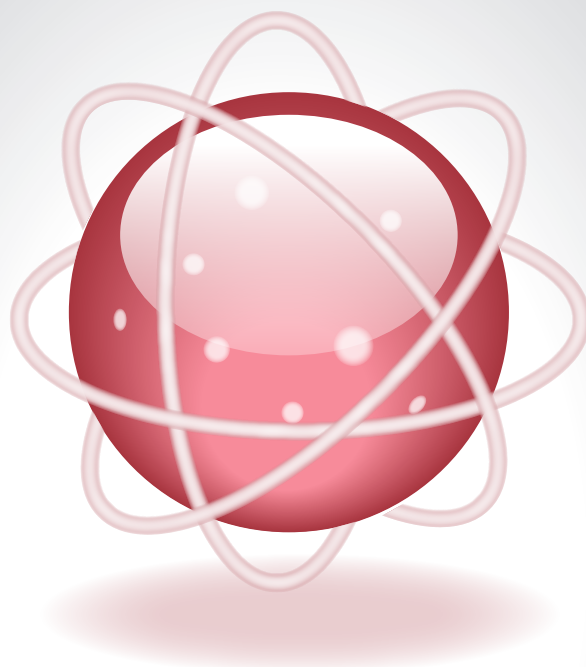




Technology for Robotic Arc Welding.

ADVANTAGE NETWORKING

SKS Weld Process Controllers



NWDE
Network Welder Data Exchange

Remote Data Acquisition
NWDE (Network Welder Data Exchange)
Remote Setup
DCOM-MS Office™ Integration

With Ethernet LAN and NWDE (Network Welder Data Exchange) SKS welding machines can be administered, process data can be documented and archived as easy as weld parameter can be saved and restored. With the functionality of allocating components (weld data/SPS) TRACEABILITY is becoming reality.

REMOTE SETUP

REMOTE BACKUP/RESTORE

SKS components are modular; you can substitute weld control units, use the backup/restore function and weld.

REMOTE BACKUP/RESTORE

REMOTE DATA ACQUISITION
Weld process data can be defined freely, collected and evaluated.

REMOTE DATA ACQUISITION

DCOM-INTEGRATION

Reports and analysis can be performed easily: DCOM which is a windows application interface is supported by SKS. Easy office integration for visualization/documentation/evaluation.

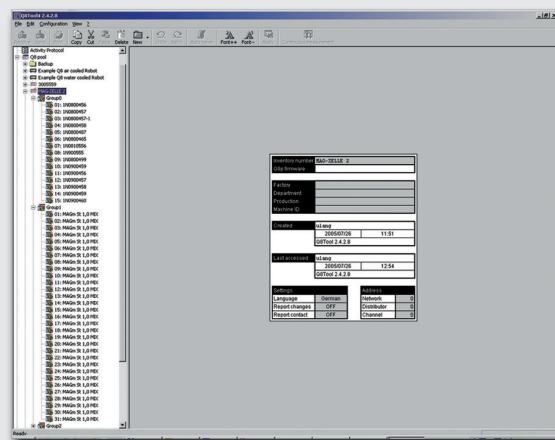
DCOM-INTEGRATION

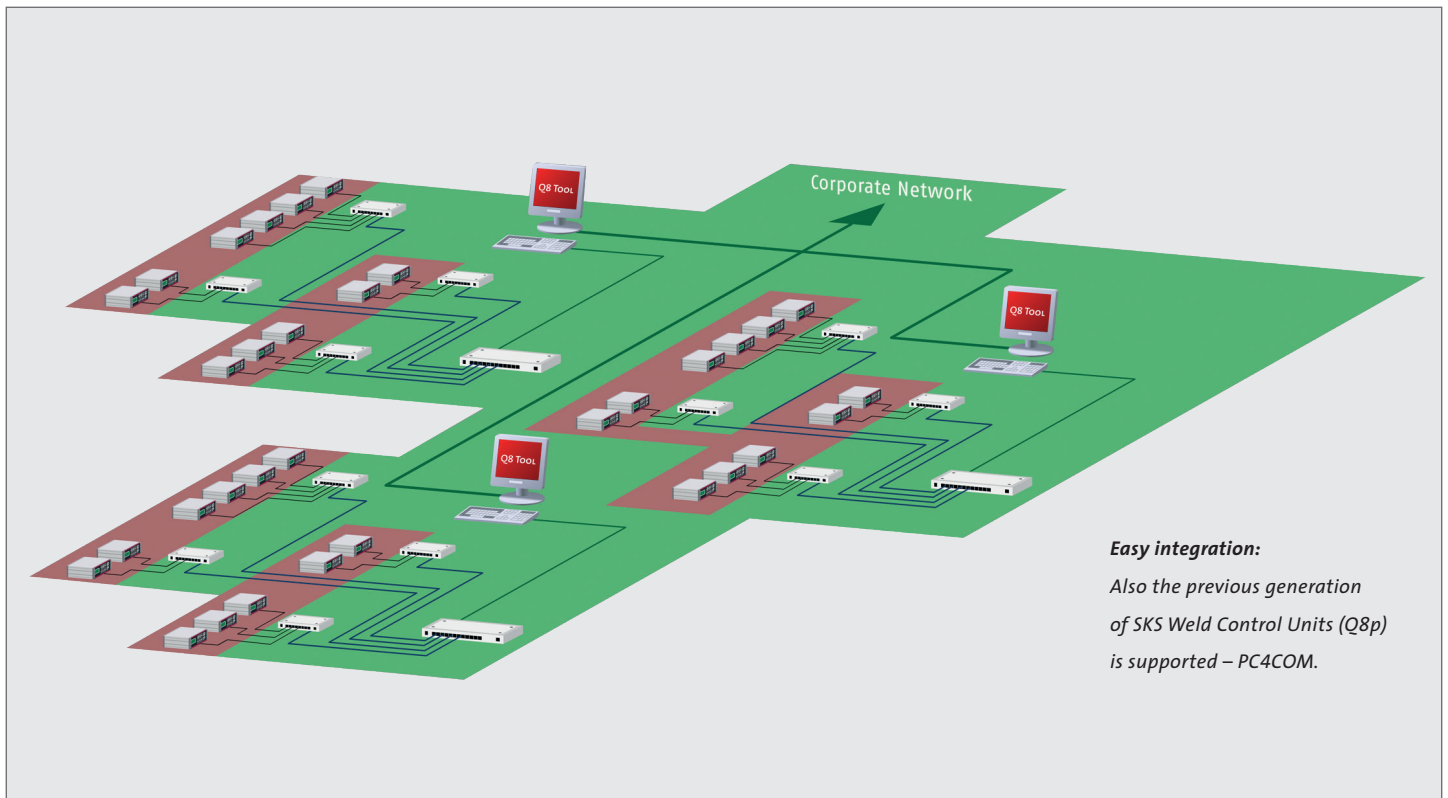
TRACEABILITY

Parts can be linked to weld data individually. Siemens PLC systems are supported.

TRACEABILITY

Parts can be linked to weld data individually. Siemens PLC systems are supported.





REMOTE DATA ACQUISITION

The remote data acquisition enables the recording and archiving of all relevant weld task data over the network (ethernet). The use of Q8Tool software enables all messages, alarms and measurement data of all weld control units connected to be archived on PC. Process data can be archived up -> Traceability.

ADVANTAGES:

Reporting of manual changes: as soon as a parameter of any weld control unit within the network is changed, an alarm is shown in the Q8Tool software.

Visualized production: status and alarms of single facilities are monitored centrally.

The comparison of actual values with given values of measurements for sample checks in production. Export in different formats, e.g. csv, Excel, etc.

Processing of measurement values for statistical analysis and plausibility checks.

Integration into the company's internal software environment for archiving and backup.

DCOM-INTEGRATION

Distributed Component Object Model is a application interface description, developed by Microsoft™, for enhancing the technology COM to be able to communicate over ethernet. As additional supplement for the Q8Tool software, external applications like MS Office™ or VBA™ can access the data stream directly. The data can be processed online e.g. for visualization with standard software.

ADVANTAGES:

Application interface allows full access to the data stream.

Simplification of further processing of the data with standard software for customer specific reports and complemented analysis.

Online analysis for fast reaction.

All relevant data can be extracted from the data stream: transparency of all data necessary for the process.

TRACEABILITY

Traceability options for the optimization of quality – SKS Welding Systems offers with the software Q8Tool in connection with the weld control units the possibility to link process data with parts. The data can be provided by the corporate's PLC marking systems with license free application interface by the Q8Tool software. So the parts can be linked to the according weld data sets.

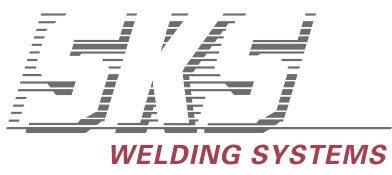
ADVANTAGES:

Weld data set can be clearly assigned to every part.

Further processing in PLC system possible (DCOM).

Verification of weld parameter of every single part.

Fast identification of faulty weldings.



www.sks-welding.com